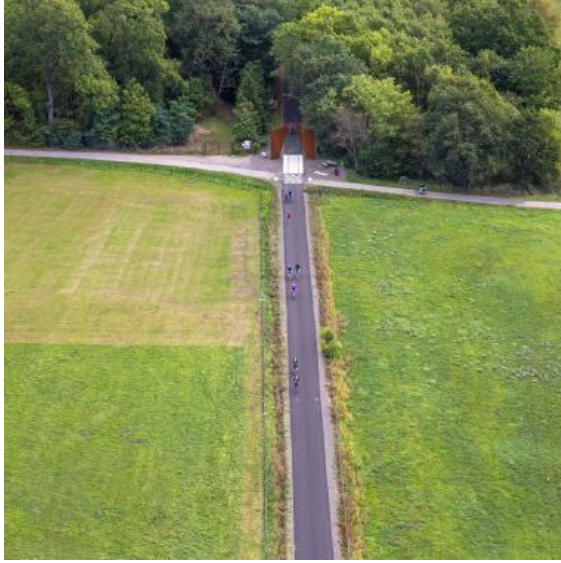



# HIKING TOUR - FROM BOERSCH TO OBERNAI

Boersch



 [03 88 50 75 38](tel:0388507538)

**Ancienne gare de Boersch (D322)  
67530 Boersch**

## + Description

The Green Path "Portes Bonheur, chemin des carrières" which extends for 11km from Rosheim to Saint-Nabor, also offers the possibility to leave the path and discover on a circular route, other points of view and landscape perspectives!

The "circuit from Boersch to Obernai" begins on the square of the railway station in Boersch, at the crossing with the Voie Verte. This circuit marks the walk of the "Portes Bonheur, chemin des carrières" and goes up a part of the river Ehn. It will also make you enjoy the panoramas on the heights of Obernai!

- Departure: Station square in Boersch, at the intersection with the RD322, in front of the former restaurant of the station.

- Parking possible: Station parking

This hike crosses the Nature Reserve of the dry hills of Bischenberg, Immerschenberg and Holiesel. To find out more, you can visit [this website](#)