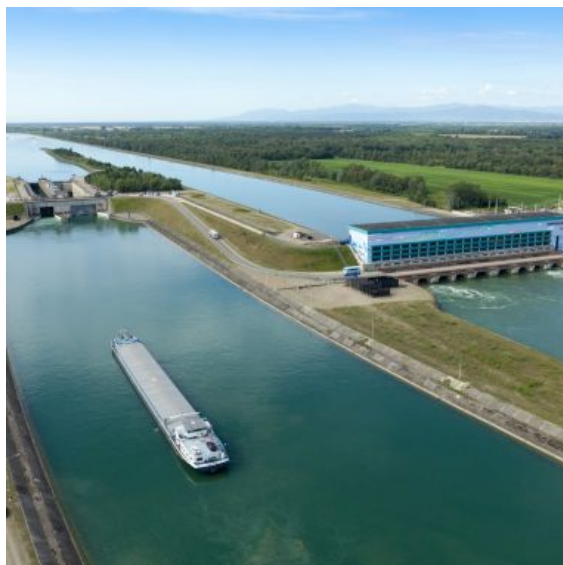



# HYDROPOWER STATION AND LOCKS IN MARCKOLSHEIM

Marckolsheim



 [03 88 92 56 98](tel:0388925698)

@ Contact

 [www.grandried.alsace](http://www.grandried.alsace)

**D 424**

**67390 Marckolsheim**

## + Description

From 1911 onwards, the electricity of the town of Marckolsheim was generated by a coal plant situated next to the Rhone-Rhine canal. Since 1962, this role has been carried out by the hydroelectric plant set up on the Grand Canal of Alsace. On average, the plant produces 928 million kWh per year. The construction of this plant, along with two locks and a dam of the river Rhine, completely changed the local landscape. You can watch boats passing through the lock from the observation bridge.

### Horaire(s) d'ouverture

From 01/01/2025 to 31/12/2025

Monday from to

Tuesday from to

Wednesday from to

Thursday from to

Friday from to

Saturday from to

Sunday from to

From 01/01/2026 to 31/12/2026

Monday from to

Tuesday from to

Wednesday from to

Thursday from to

Friday from to

Saturday from to

Sunday from to

TOURIST OFFICE

Place du Beffroi - BP 104 67213 Obernai Cedex

Phone: +33 (0)3 88 95 64 13 - Fax: +33 (0)3 88 49 90 84

  
L'Alsace dont vous rêvez